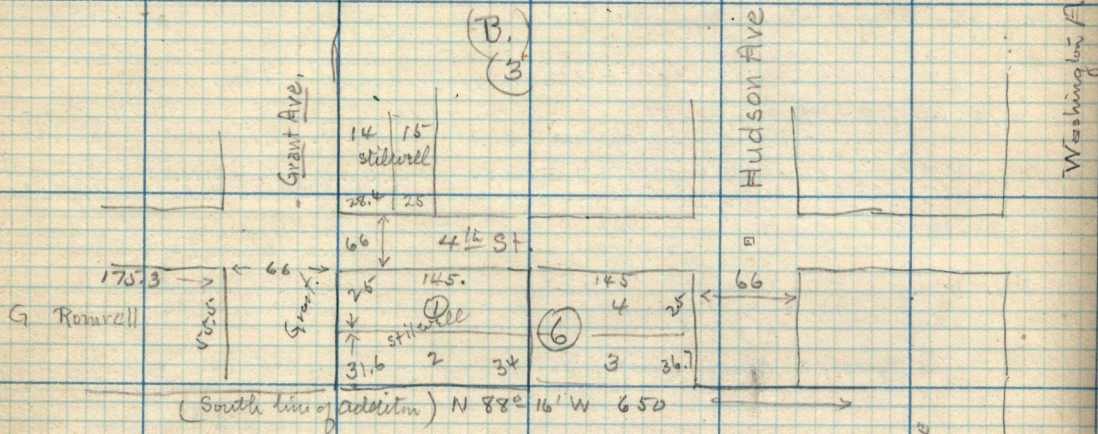


- 22-162 - W^g Gift to Church - Pt. N.E. 1/4 24 - 12³/₄ in cent. of St. - at John D. Powell's SE Cw. or. 36¹/₂ in. school 26.4 - N 12.03 R. 3.74 R. 5.10.05 R. W. 4 R. to Gap
- 32-475 W^g Gift to Matilda Gull - Pt. N.E. 1/4 24 - 12³/₄ in. cent. of St. - 12³/₄ in. 42 R. 10. 96. W. 7 6.02 R. 7.1. 91. S. of N. E. Cw. 74 - E 39 R. 10. 16 - 5 13 1/2 R - W 43.4. 6. 90 - more or lead to 6. 7 line of L. D. S. Church Property - N 12.08 R - W 13 1/3 R - N 6.02 R. to Gap 3.7 in.

Plat Book - 3-697 -
 Abstr. Record 7- p. 111 -

Part of Orchard Grove



Tuesday Jan. 20 '03
 Survey of Canning Co. Lot in Rivedale
 for Jas. Mack of the Canning Milling & E. Co.
 in N.E. 1/4 Sec. 7, T. 5 N. R. 1. W. S. 4 W.

